

# SpeedTube™

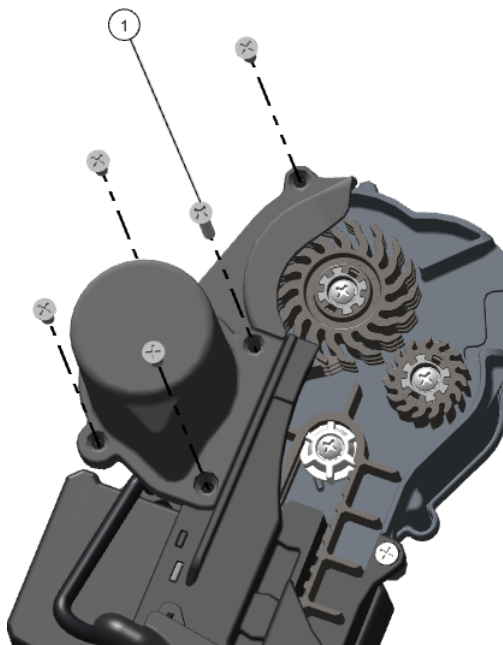
---

## SpeedTube Motor Replacement Kit

### Motor Removal

#### Step 1:

Remove the five screws from the motor cover.  
Retain the longer screw (1) for use when re-installing.



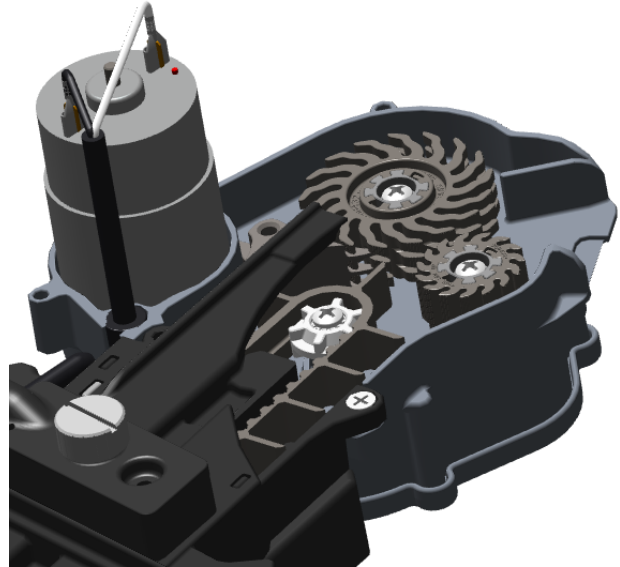
#### Step 2:

Remove the motor cover and o-ring.

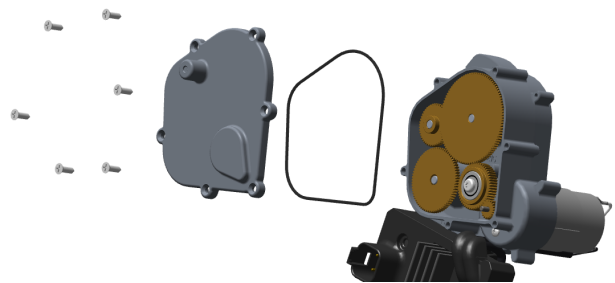


**Step 3:**

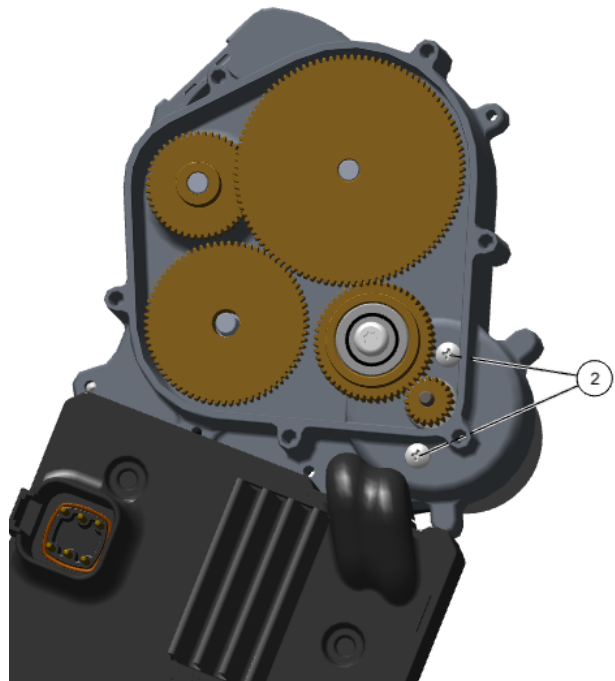
Remove the leads from the motor. Be cautious not to damage the wires or connectors.

**Step 4:**

Turn the SpeedTube over and remove the six screws from the gearbox cover. Remove the gearbox cover and o-ring.

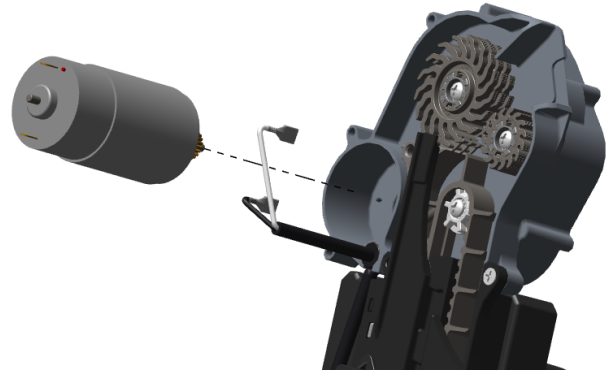
**Step 5:**

Remove the two screws (2) that hold the motor in place. One screw is located inside the gearbox, and the other is located outside the gearbox as shown.

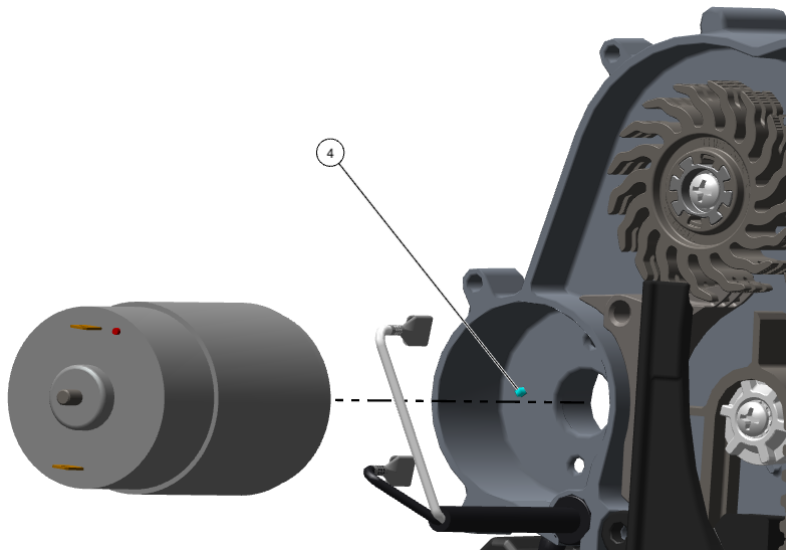
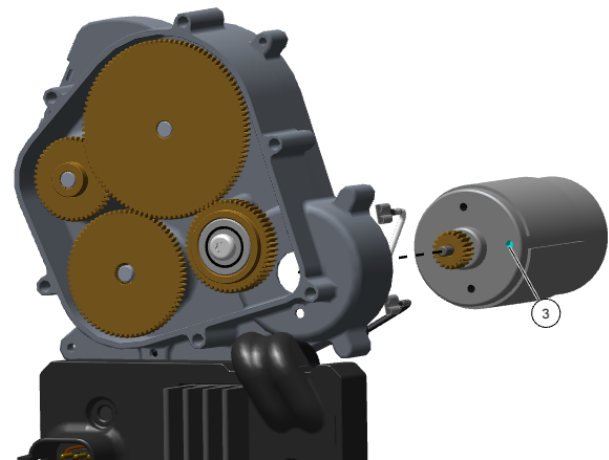


**Step 6:**

Remove the motor assembly from the gearbox.

**Motor Installation****Step 1:**

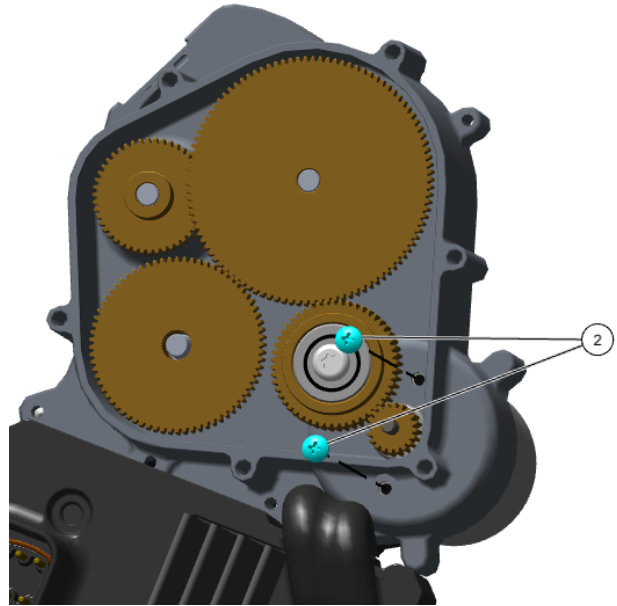
Install the new motor assembly in the gearbox. Align the hole in the motor (3) with the alignment pin (4) on the gearbox housing to ensure proper motor orientation. Also ensure the motor output gear meshes correctly with mating gear in the gearbox.



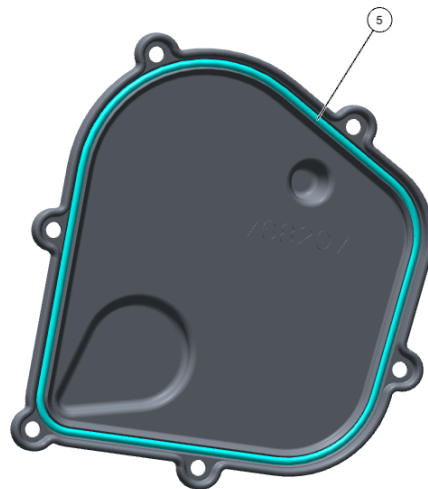
**Note:** If the motor is not aligned, it will not install properly and damage could result.

**Step 2:**

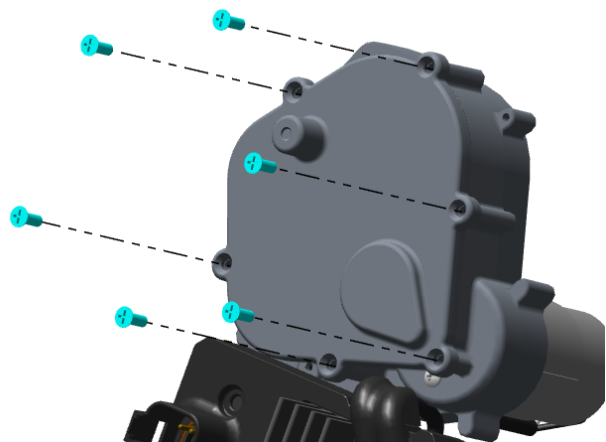
Install the two provided motor screws to secure the motor to the gearbox. Torque to 8 Lb-In.

**Step 3:**

Install the new gearbox o-ring (5) in the gearbox cover.

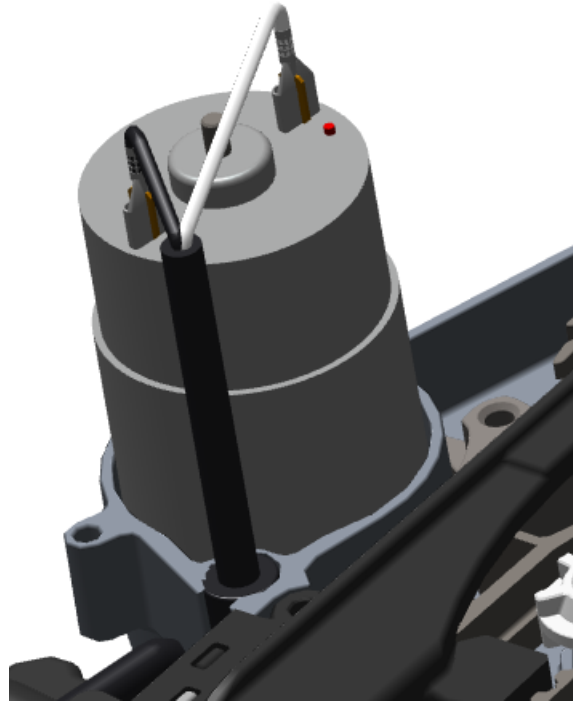
**Step 4:**

Place the gearbox cover back on the gearbox and re-install the six screws to secure the cover. Torque to 18 Lb-In.



**Step 5:**

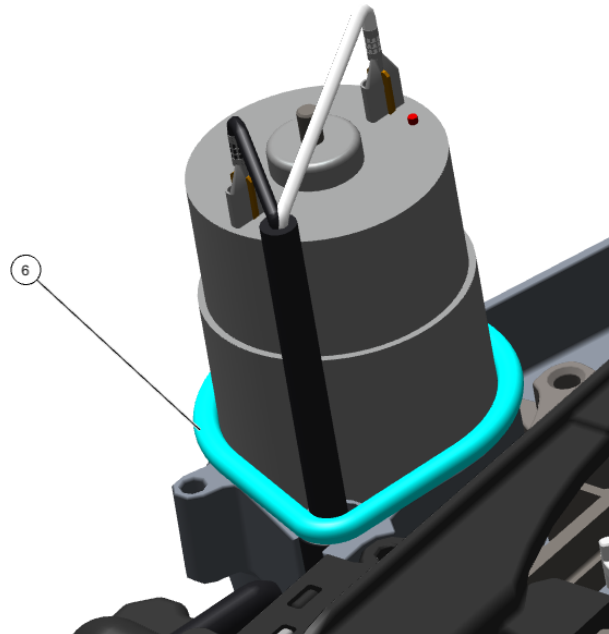
Re-connect the wire leads to the new motor.  
Connect the white wire to the motor terminal with the red dot. Connect the black wire to the unmarked motor terminal.



**Note:** On older SpeedTubes, the white wire may be red.

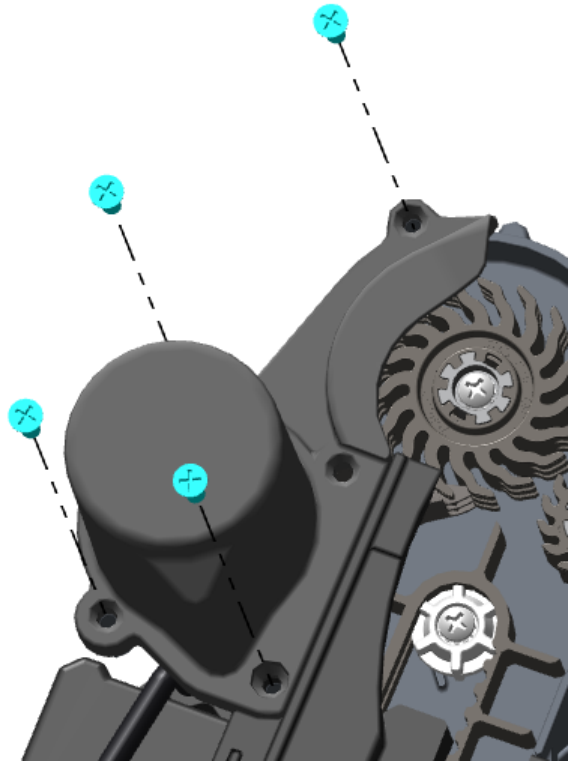
**Step 6:**

Install the new motor o-ring (6) over the motor and wire leads as shown.



**Step 7:**

Position the motor cover over the motor and secure with the four provided motor cover screws.

**Step 8:**

Re-install the longer motor screw (1) set aside during the removal process. Ensure that the feeder wheel comb is aligned with this screw. Torque to 18 Lb-In.

