

SpeedTube™

SpeedTube Belt Cover and Housing Replacement Instructions

Step 1

Remove the sensor transmitter using the hand knob. Move the sensor to the side. Refer to figure 1.

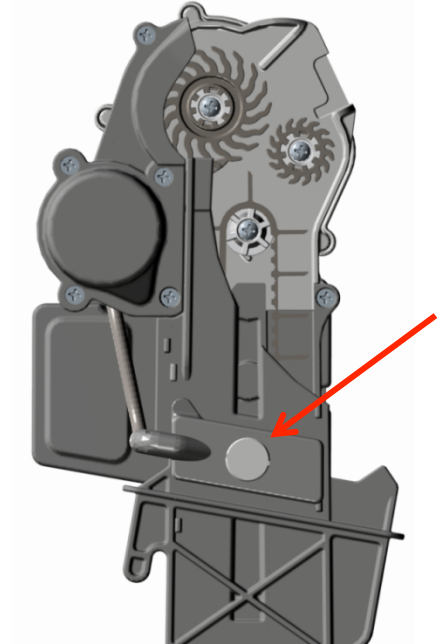


Figure 1

Step 2

Remove the SpeedTube belt cover. Push up on the belt cover near the sensor removed in step 1, while simultaneously releasing the lower cover retaining tab. Rotate the cover away from the SpeedTube belt housing. Refer to figures 2a and 2b.

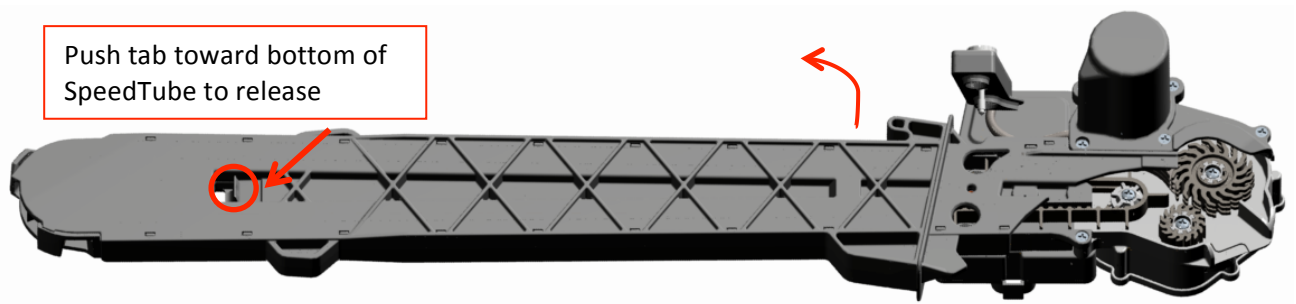


Figure 2a

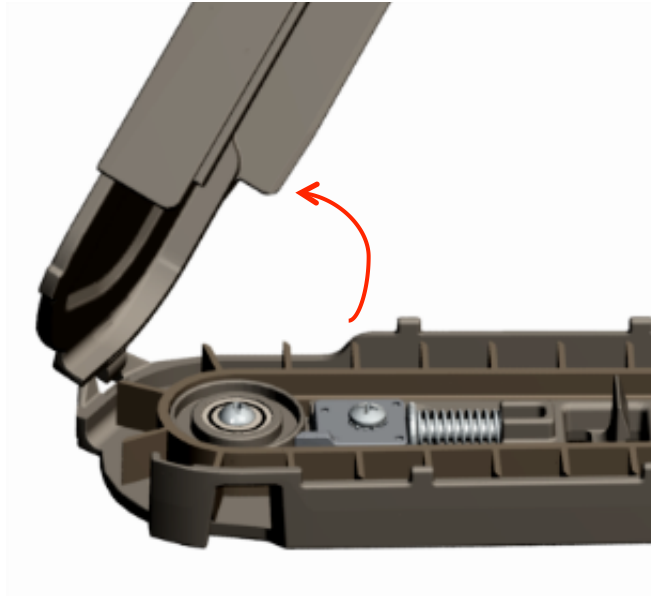


Figure 2b

Step 3

Remove the belt by rotating it by hand and rolling it off the bottom idler pulley. Remove from the top drive pulley.

Step 4

Using a #2 Phillips screw driver, remove the six (6) screws that secure the belt housing to the gearbox housing and SpeedTube module. Refer to figure 4.

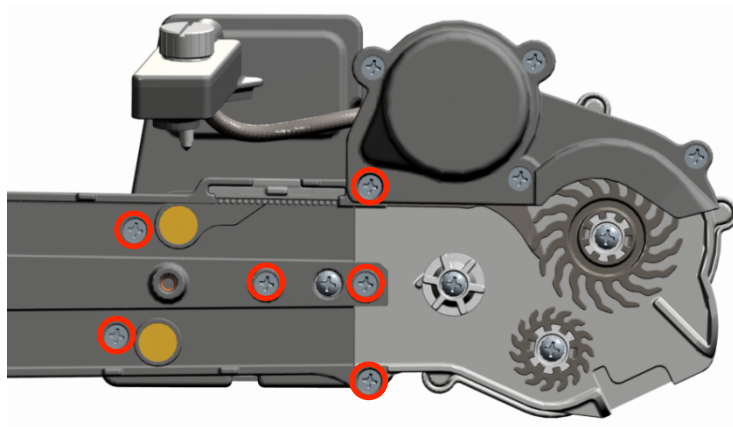


Figure 4

Step 5

Remove the belt housing. Transfer the insert to the new belt housing before installing. Refer to figure 5.

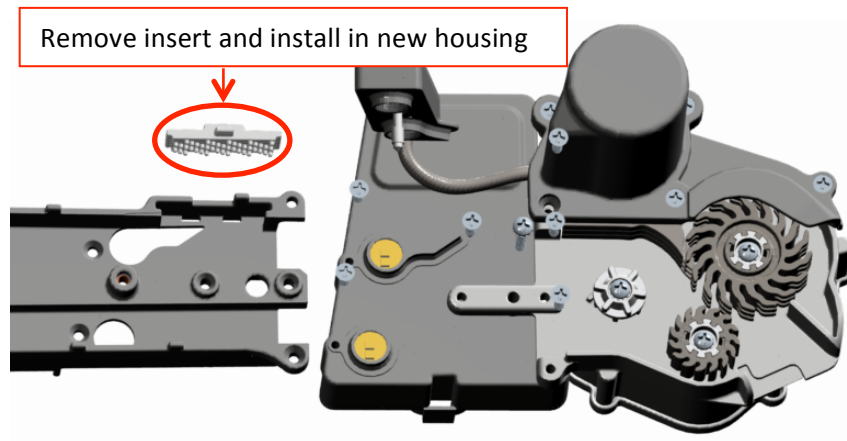


Figure 5

Step 6

The idler pulley assembly also needs to be removed and transferred to the new housing. Remove the single screw and transfer the entire assembly shown in figure 6. Leave the screw loose in the new housing as the belt will need re-tensioned when installed.

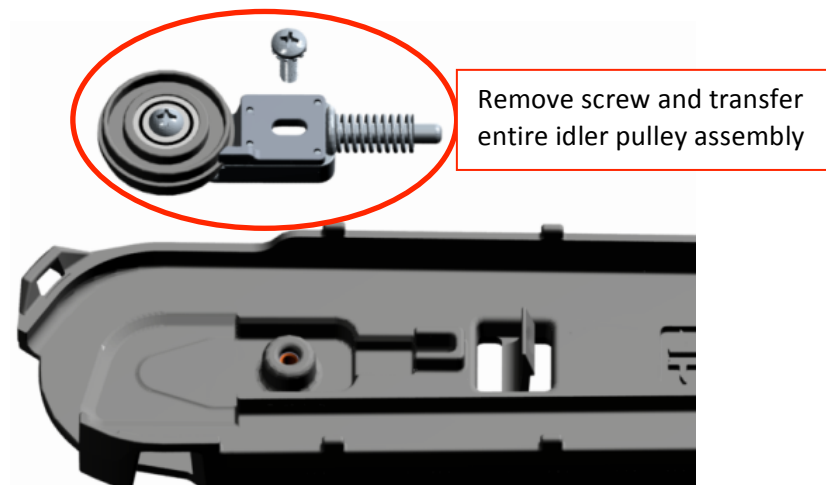


Figure 6

Step 7

Install the new belt housing. Hand tighten the screws into the same position they were removed. The two hi-lo screws should be installed in the bottom two spots into the module. To avoid stripping the threads, do not overtighten the screws. Refer to figure 7.

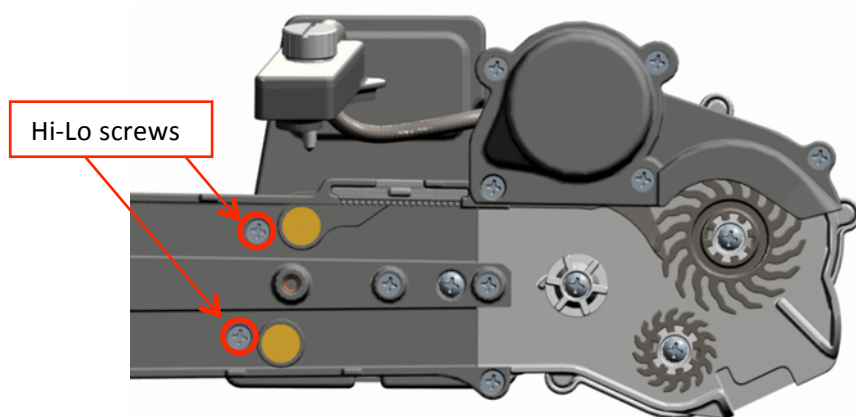


Figure 7

Step 8

Re-install the belt by placing it around the top drive pulley. Ensure it is fully seated. Rotate the belt by hand and roll it onto the bottom idler pulley. Rotate the belt back and forth to check alignment and smooth operation.

Note: When re-installing the belt, take notice of the flight orientation. Reference the diagram molded into the SpeedTube housing for correct orientation. Refer to figure 8.

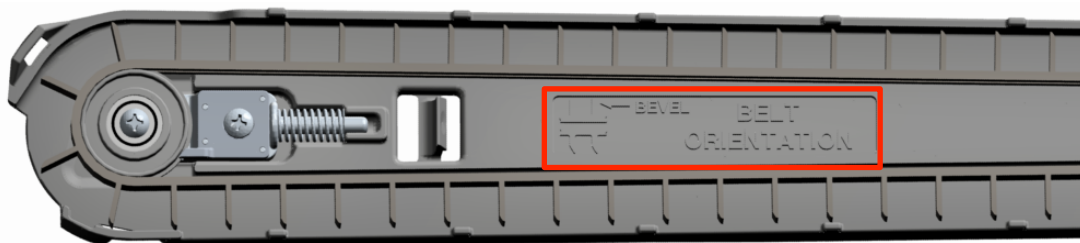


Figure 8

Step 9

To re-set the tension for the new belt, loosen the tension bracket retaining screw and ensure the bracket is free from debris and can move freely. Refer to figure 9.

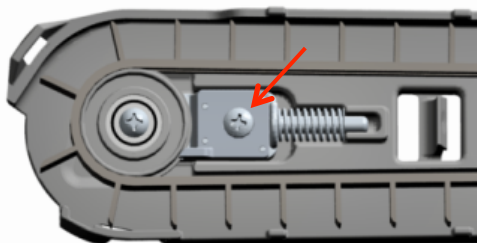


Figure 9

Step 10

Roll the belt back and forth by hand. The coil spring will provide the appropriate tension to the belt. Re-tighten the tension bracket retaining screw.

Step 11

Re-install the belt cover. Confirm the hook on the bottom of the cover is inserted in the latch on the belt housing as shown in illustration 9. Press the cover down around the lower retaining clip. A “click” should be heard, confirming the cover is secured to the housing. Re-install the sensor.

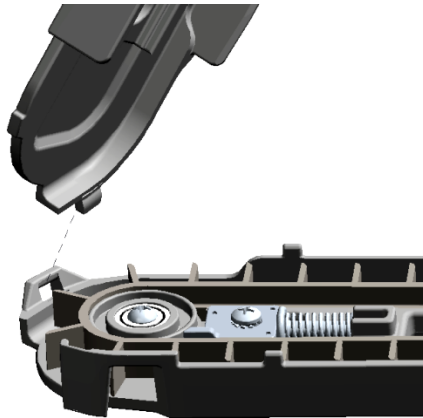


Figure 11