

SpeedTube™

Case 21XX Row Unit Kit Installation Manual

Estimated Install time: 5 minutes per row



System Hardware

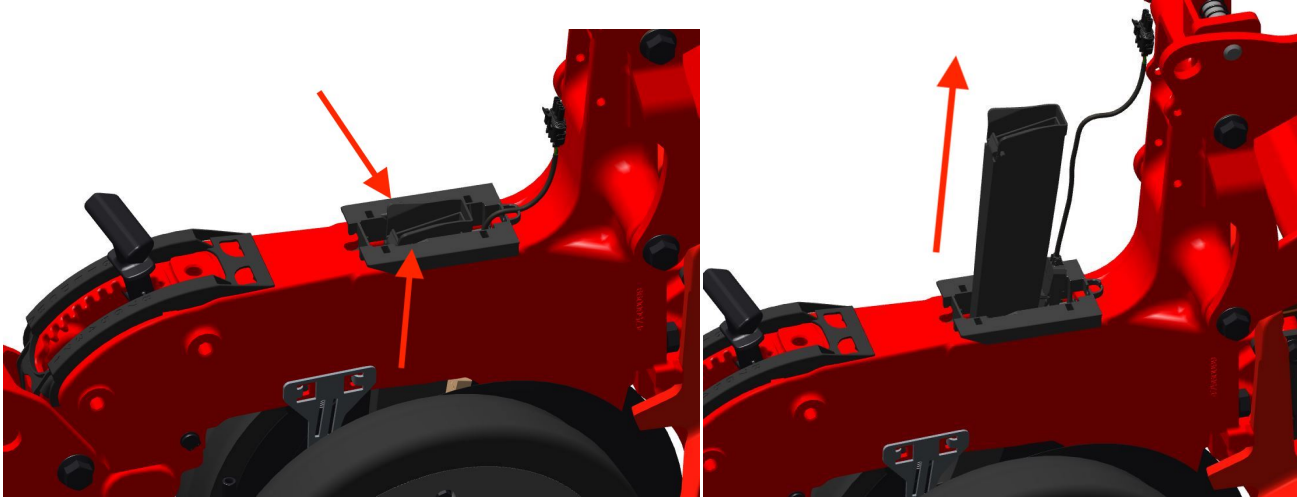
Part Number	Description	Quantity
768800	CNH21XX SpeedTube Upgrade Kit	1 per row
The Row Unit Kit includes the following parts		
768731	Speedtube – CNH	1 per row
768643	Seed Meter Cover Assembly	1 per row
768801	Shank Cover	1 per row
768802	Lower Boot	1 per row
768803	Spring	1 per row

1) Prepare for install

- a) Raise the planter.
- b) Unplug and remove meter from the Row Unit.

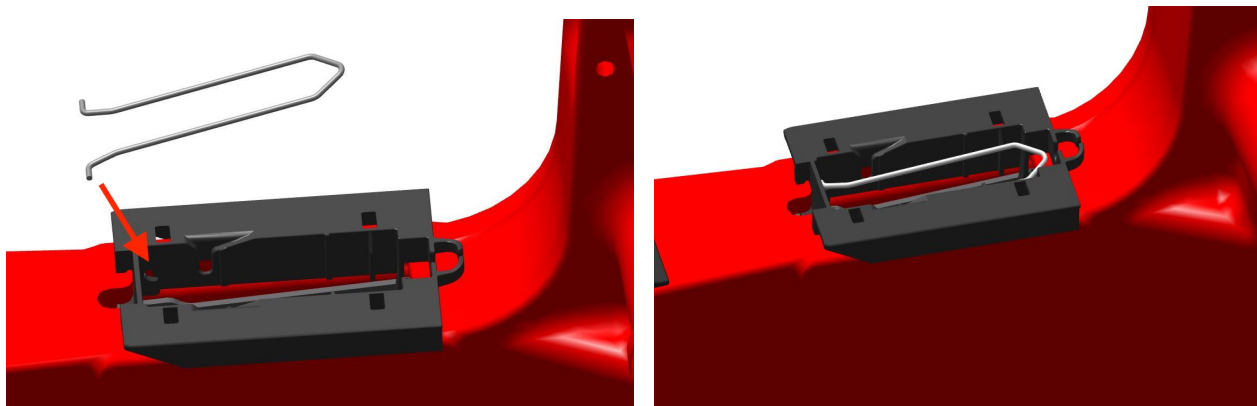
2) Remove the Case seed tube

- a) Unplug the seed tube sensor.
- b) Pinch the back of the seed tube to release and pull up to remove from row unit.

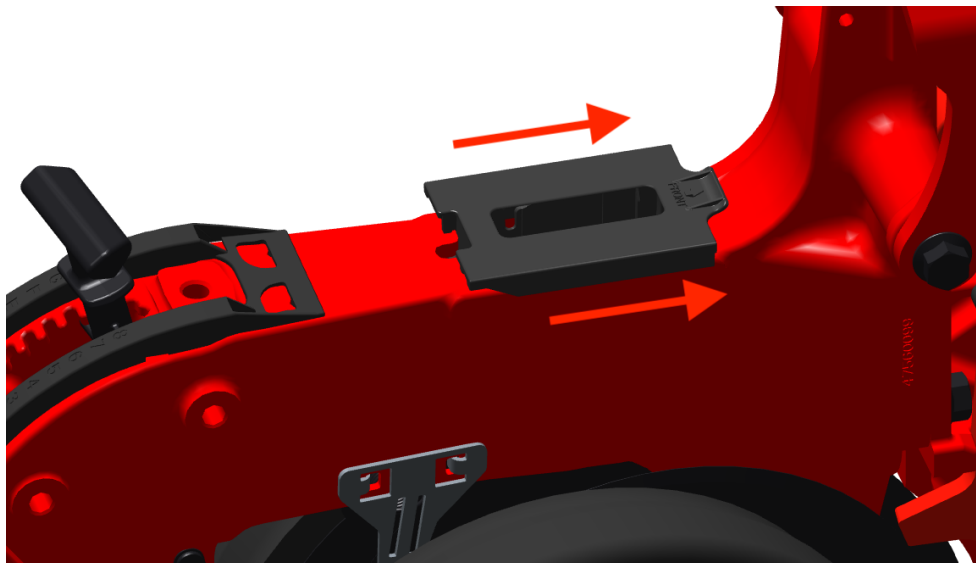
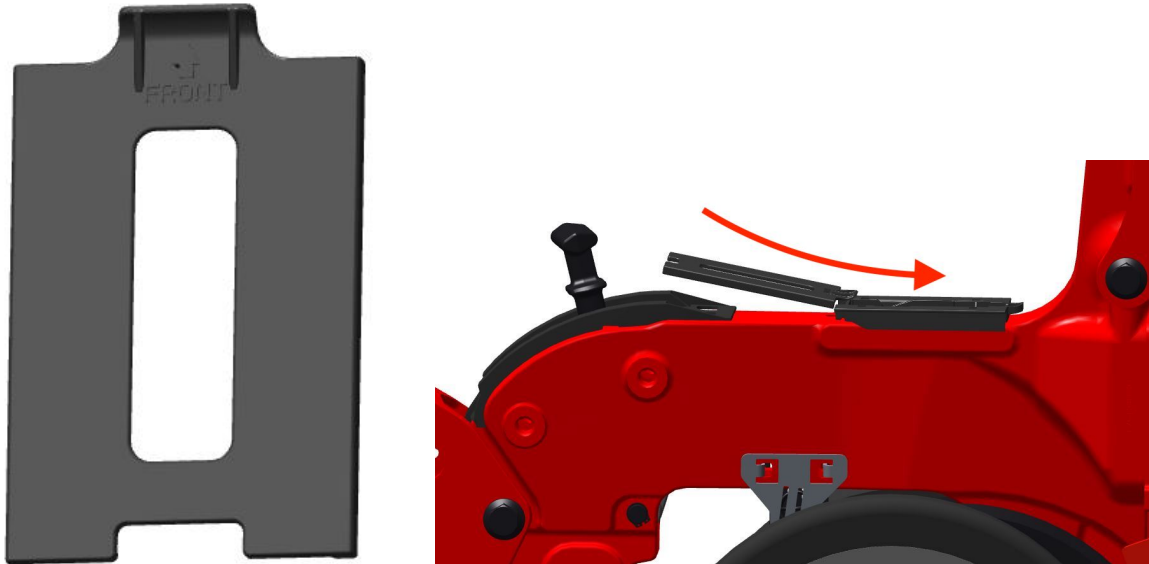


3) Install the SpeedTube Spring

- a) Install the SpeedTube spring into the small holes of the plastic insert (just behind the larger holes that the seed tube was clipped into).

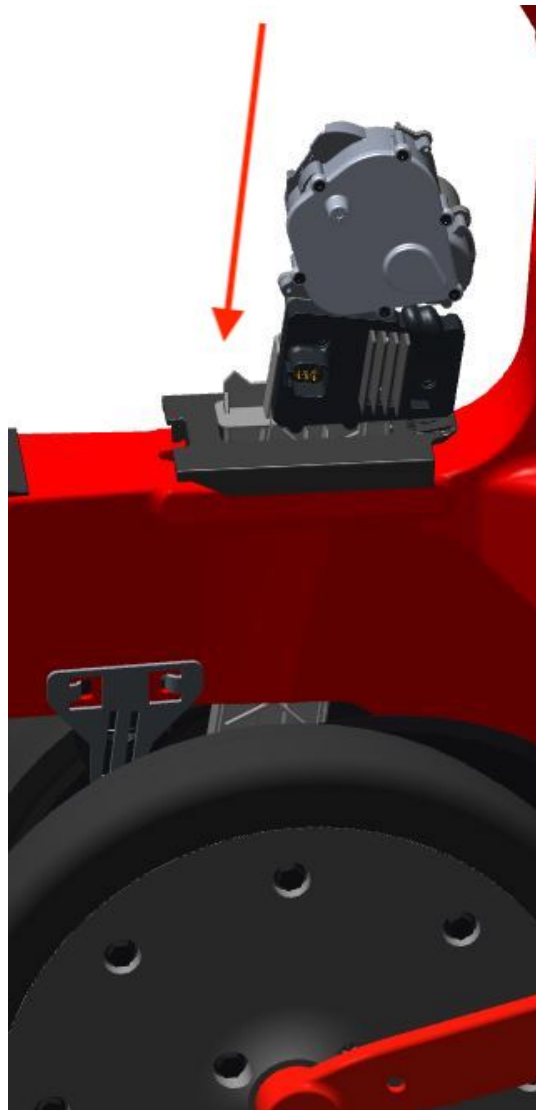
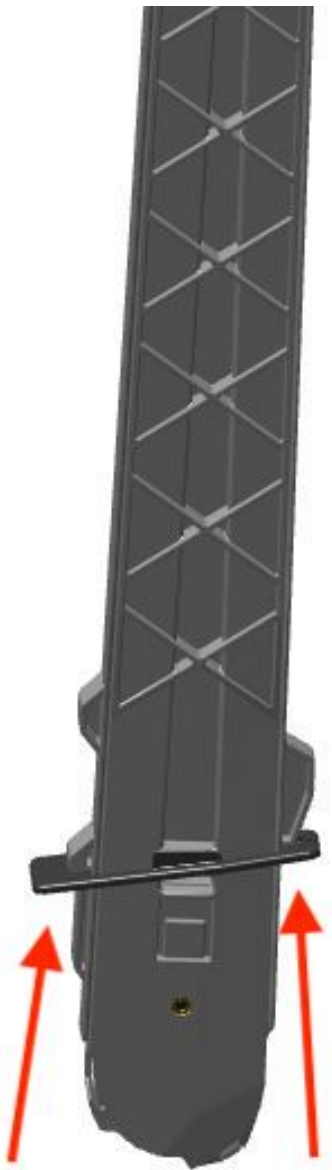


- 4) Slide the SpeedTube shank cover over the plastic insert**
- a) Locate the sliding grooves on the sides of the plastic insert and slide the shank cover over from the back to the front of the row unit until it is fully seated.

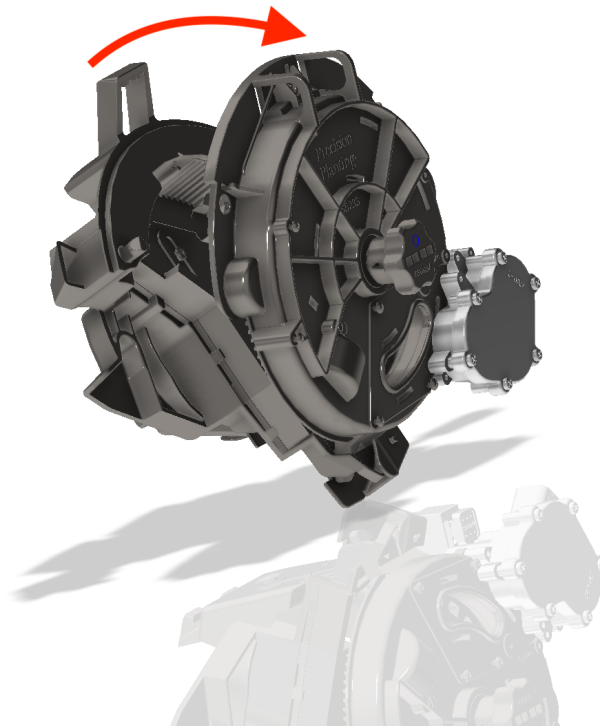
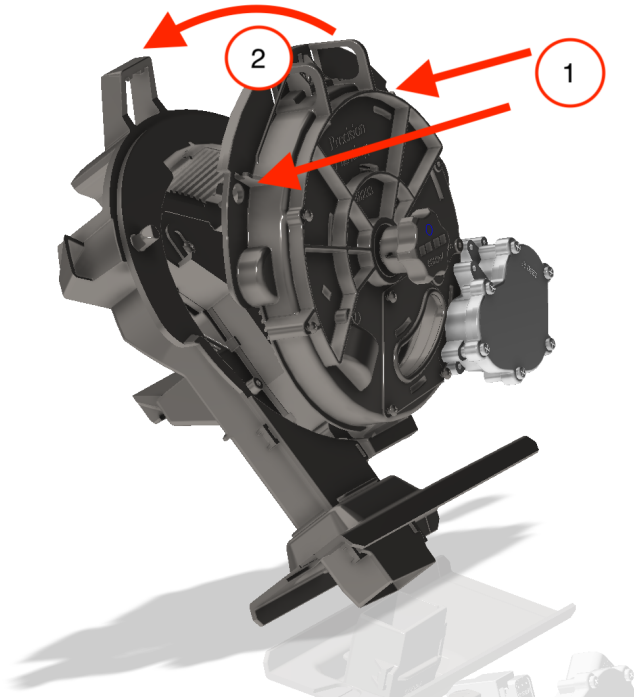


5) Install SpeedTube lower boot cover and SpeedTube into row unit

- a) Locate the front of the lower boot cover (indicated with an arrow on the tapered end).
- b) Slide on from the bottom of the SpeedTube upward until the tab fits into the clip hole of the SpeedTube housing.
- c) Install speedtube into row unit
 - i) Feed in slowly through the spring so that the boot is not moved to a position outside of its intended location.

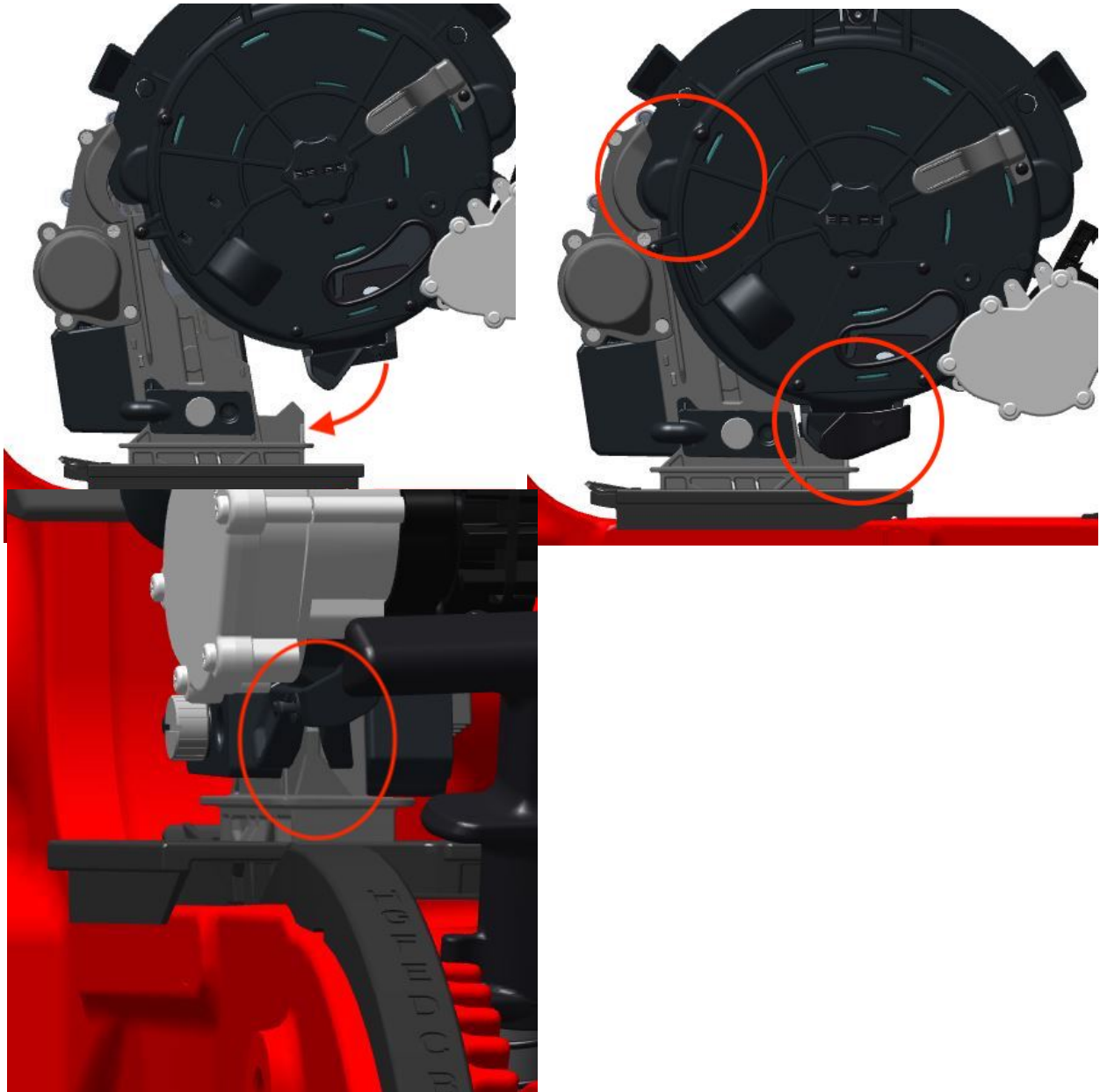


- 6) **Change the vSet2 meter cover from Seed tube ready to SpeedTube ready**
- a) Remove the meter from the hopper
 - b) Release the spring clips on the top of the meter as indicated in Figure 1



7) Ensure vSet2 meter and SpeedTube interface well

- a) Install the assembled hopper and meter to the row unit. Refer to the vSet 2 instructions for details. When locking the hopper in place with the rear latch, ensure the SpeedTube housing and vSet 2 meter housing are properly aligned. The meter housing should pilot into the open area above the SpeedTube motor housing. The tab on the SpeedTube housing should align between the opening of the meter housing and meter cover.



8) Plug in Speedtube and vDrive into CAN expansion hub with appropriate length CAN jumpers (Reference CAN Expansion Hub Installation 955720)

- a) Speedtube will typically use a 10 inch black jumper and vDrive will typically use a 20 inch black jumper.

9) Installation Completion

- a) Reinstall the opening disks with 0"-1/4" of contact (check multiple locations). Shim disks as necessary.
- b) Reinstall both gauge wheels according to Manufacturer's instructions.